



CLEARVIEW SECURITY



CRIMSAFE
ULTIMATE

Crimsafe Ultimate frames are 40% stronger than regular Crimsafe. They feature a curved profile where it meets the mesh and a sleek clip on cover which completes the stylish look.

- **WIDE SELECTION OF COLOURS**
- **ARCHITECTURALLY DESIGNED**
- **STYLISH FINISH**
- **EXTRA STRENGTH**
- **TESTED TO WITHSTAND 30 YEARS EXPOSURE TO HARSH ENVIRONMENTS**
- **15 YEAR EXTENDED WARRANTY***

*Terms and conditions at www.crimsafe.com.au/warranty

Authorised licensee of

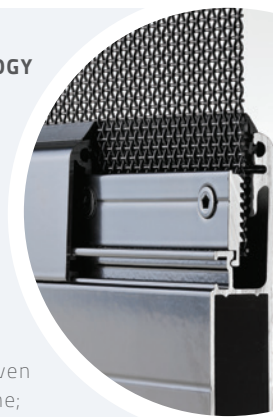


CRIME PREVENTION PARTNERS

FEATURES & BENEFITS

■ **ULTIMATE SCREW-CLAMP™ TECHNOLOGY**

Crimsafe's Screw-Clamp™ technology has special teeth that lock the mesh deep into the frame, spreading the impact to withstand powerful and sustained attacks. This makes it virtually impossible to separate the frame from the mesh.



■ **TAMPER RESISTANT FASTENERS**

These tamper resistant fasteners are driven right through the mesh and into the frame; binding the mesh, the Screw-Clamp and the frame together into a tightly integrated unit for greater security.

■ **STYLISH CLIP ON COVER**

A clip on cover conceals the Crimsafe Screw-Clamp™ system and adds an additional layer of security. The cover also creates a corrosion resistant chamber that protects the system from the corrosive effects of the environment.

■ **HIGH ENVIRONMENTAL RESISTANCE**

The Santoprene insulator between the mesh and the frame virtually eliminates galvanic corrosion created by different metals coming into contact with each other. It also reduces water penetration and salt build-up in harsh environments.

■ **15 YEAR WARRANTY**

Crimsafe Ultimate comes with a 10 year warranty, plus a 5 year extended warranty. To register for the extended warranty, simply go to www.crimsafe.com.au/warranty

■ **AUSTRALIAN STANDARDS**

Crimsafe always exceeds the relevant Australian and industry standards for security.