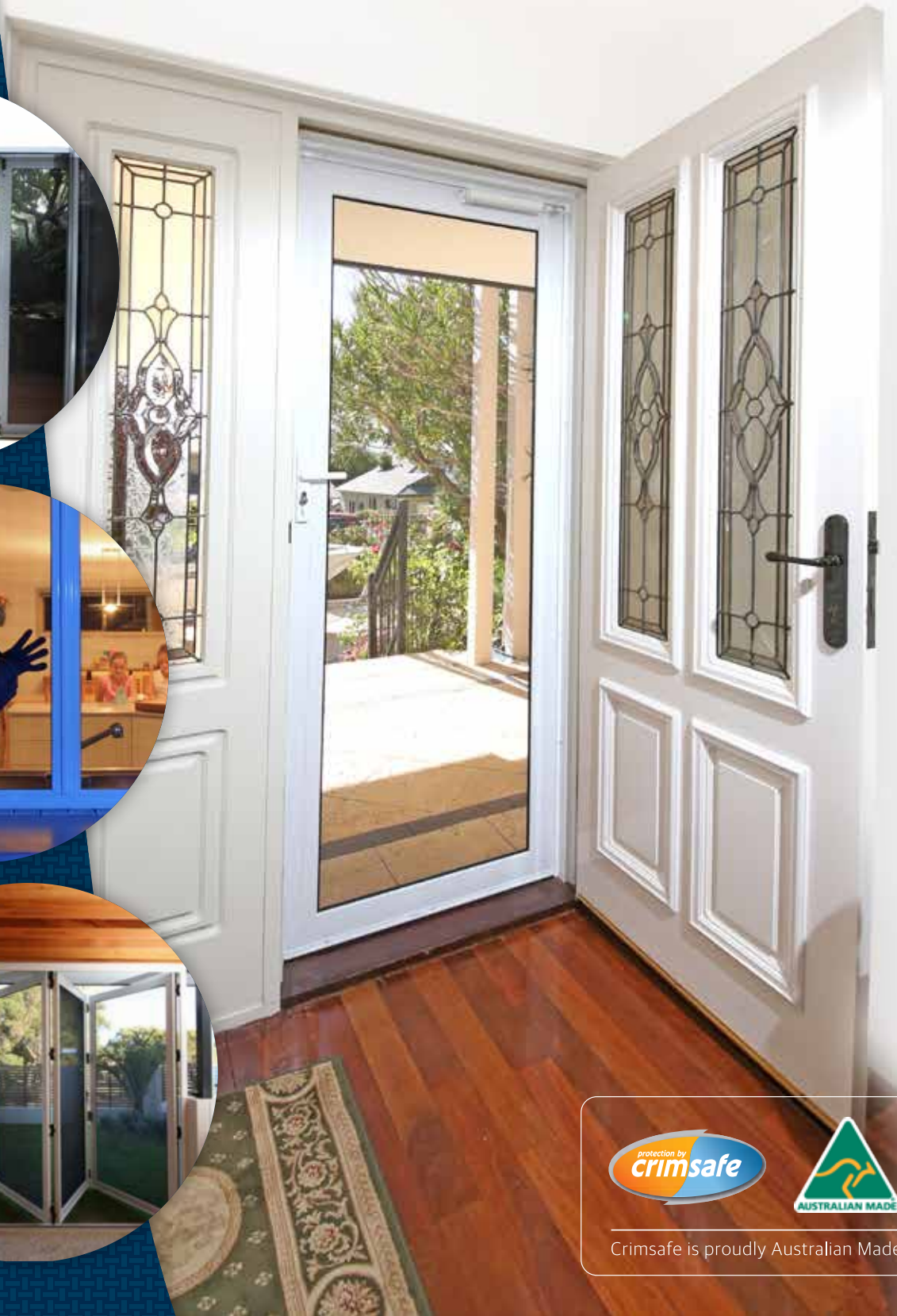




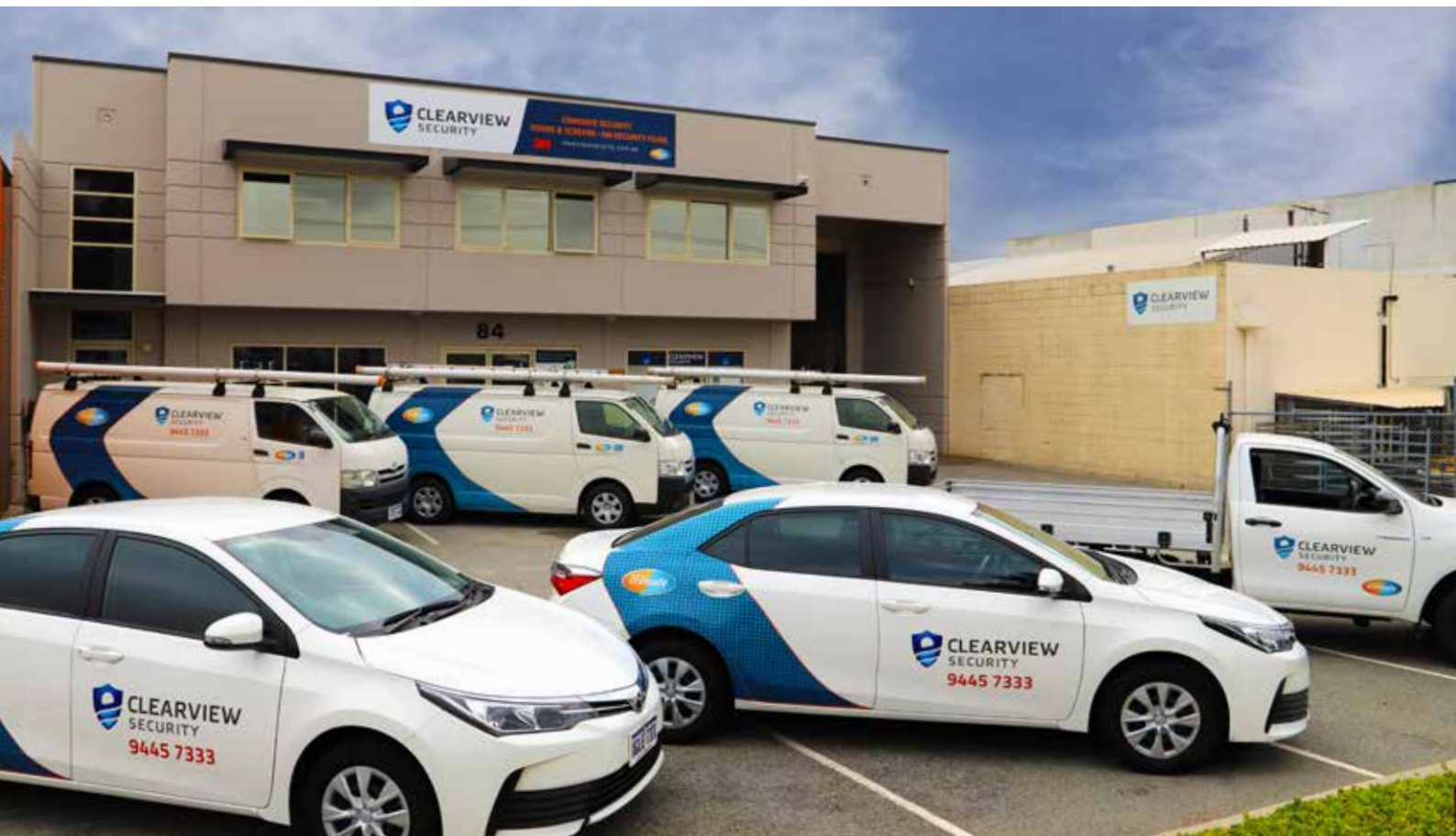
CLEARVIEW SECURITY

— trusted ■ reliable ■ safe —



Crimsafe is proudly Australian Made

ABOUT CLEARVIEW



At Clearview, we believe home security is an investment in a safer lifestyle – simple as that.

Clearview security is a local West Australian business that has been servicing the people of Perth's security needs for over 20 years. Over time, we have built a strong reputation for listening to our customers' needs, delivering exactly what they want and doing so in a reliable, polite and tidy manner.

Our business puts quality and service first, and we rely on satisfied customers' referrals. We give each job our utmost care and attention, because your satisfaction is our number one priority.

Your security is our business and as such we offer a complete range of security products designed to strengthen and complement your home.

Clearview Security provides strong and reliable, home, office and commercial security solutions. All of our products go above and beyond the industry standards, to ensure you and your belongings are secure. Personal protection is becoming increasingly more important each day.

We value safety

We value our community's safety, and take it upon ourselves to provide office and home security products that make a real difference.

We strive to listen

We highly regard ourselves on providing quality advice and personal service, understanding each customer is unique with different needs.

We're flexible

We offer a range of payment options, which accommodate for a no fuss, smooth transaction, every time.

At Clearview Security, you always come first.

Ultimate Hinge Door



Inswinging Safe-S-Cape



Double Sliding Doors



Outward
Opening Safe-S-Cape



3 Panel Bifold Door



Wellington Design

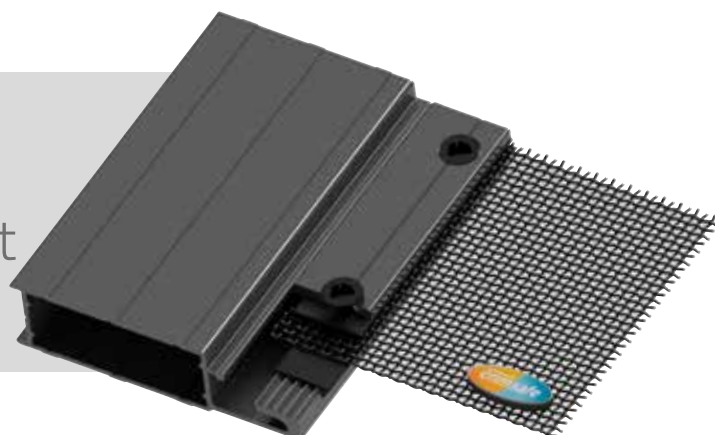


CRIMSAFE DOORS



Regular

Increase security and enhance your lifestyle – anywhere an attractive yet strong door is required.



3-Point Locking

All our hinged and sliding doors come with 3-point locking as standard – this means added security.

Can Be Constructed Out-Of-Square

If your door space isn't exactly square, our doors can be cut to suit any opening without a loss in strength.

Screw-Clamp™ Security

Only Crimsafe clamps 304 structural grade, Tensile-Tuff® security mesh between two serrated pieces of metal, then drives a screw right through both mesh and frame to ensure a vice-like grip.

Tamper-Resistant Screws

Exclusive to Crimsafe. Screws can only be applied or removed by a tool registered with Crimsafe.

Enhanced Lifestyle

Crimsafe provides unhindered views, keeps out mosquitoes, and lets you keep a cool, safe house in summer.

Australian Standards

Crimsafe always exceeds the relevant Australian and industry standards for security.



Download our decorative door brochure at www.clearviewsecurity.com.au



**HEAVY DUTY
REAR INTERLOCK**

**3 POINT
LOCKING**

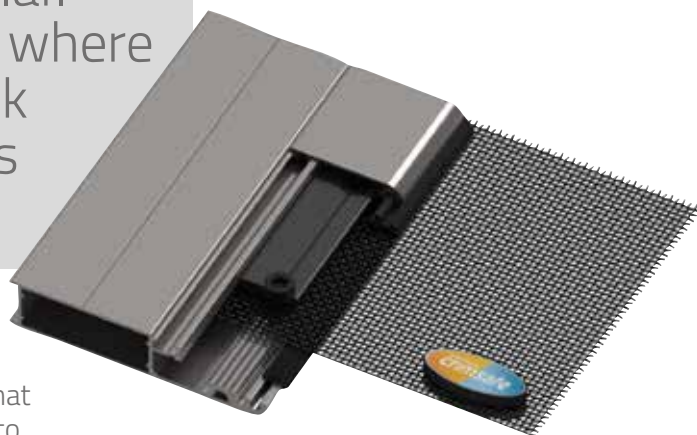
**ROLLERS
TOP &
BOTTOM**

CRIMSAFE DOORS



Ultimate

Crimsafe Ultimate frames are 40% stronger than Crimsafe Regular. They feature a curved profile where it meets the mesh and a sleek clip on cover which completes the stylish look.



Ultimate Screw-Clamp™ Technology

Crimsafe's Screw-Clamp™ technology has special teeth that lock the mesh deep into the frame, spreading the impact to withstand powerful and sustained attacks. This makes it virtually impossible to separate the frame from the mesh.

Tamper-Resistant Fasteners

These tamper resistant fasteners are driven right through the mesh and into the frame; binding the mesh, the Screw-Clamp™ and the frame together into a tightly integrated unit for greater security.

Stylish Clip on Cover

A clip on cover conceals the Crimsafe Screw-Clamp™ system and adds an additional layer of security. The cover also creates a corrosion-resistant chamber that protects the system from the corrosive effects of the environment.

High Environmental Resistance

The santoprene insulator between the mesh and the frame virtually eliminates galvanic corrosion created by different metals coming into contact with each other. It also reduces water penetration and salt build-up in harsh environments.

15 Year Warranty

Crimsafe Ultimate comes with a 10-year warranty, plus a 5-year extended warranty. To register for the extended warranty, simply go to www.crimsafe.com.au/warranty

Australian Standards

Crimsafe always exceeds the relevant Australian and industry standards for security.





Crimsafe Ultimate
Double Doors
Cedar Look Powdercoat

CRIMSAFE SCREENS



Fixed Screens

Crimsafe fixed security screens are non-moving panels that can be fitted to almost any window type. These panels can cover just the opening section or the full window with a variety of different frame types.



Easy Installation

Crimsafe Security System products are custom-built off-site, then quickly installed at your home.

Smaller Frame Sections

Boasting the strength of door frames, but with a smaller frame width.

Slimline design

Heavy duty protection without heavy duty looks. A cross-section reveals the Crimsafe standard frame is only 11mm thick and 35mm wide.

Screw-Clamp™ Security

Only Crimsafe clamps 304 structural grade, Tensile-Tuff® security mesh between two serrated pieces of metal, then drives a screw right through both mesh and frame to ensure a vice-like grip.

Tamper-Resistant Screws

Exclusive to Crimsafe. Screws can only be applied or removed by a tool registered with Crimsafe.

Concealed Fixings

Ask about Crimsafe Conceal-Fit frames which have a clip-on cover to hide the fixings – making it an attractive and neat option.

Enhanced Lifestyle

Crimsafe provides unhindered views, keeps out mosquitoes, and lets you keep a cool, safe house in summer.

Blocks Heat Transfer

Blocks out 53% of solar heat gain through windows, keeping your home cooler in summer and warmer in winter. Save on power by reducing running cost of air-conditioning.

Australian Standards

Crimsafe always exceeds the relevant Australian and industry standards for security.

CRIMSAFE SCREENS

Safe-S-Cape Screens

Crimsafe hinged Safe-S-Cape screens allow a quick exit in the event of a fire or emergency. Extremely secure from the outside, they swing open easily with a one-touch push from the inside.

Keyless Exit & Quick Release

Peace of mind, knowing that in an emergency you can get out of the house fast thanks to the one-touch and push release.

Full Length Locking Stile & Integrated Hinge

Increased strength and resistance under attack and no sagging.

Three-Tiered Anti-Jemmy System

A burglar must get through 3 physical barriers to get at the Safe-S-Cape's lock.

Easy Access To Window Surface

The Crimsafe panel swings away from the exterior window surface, enabling easy cleaning.

Screw-Clamp™ Security

Only Crimsafe clamps 304 structural grade, Tensile-Tuff® security mesh between two serrated pieces of metal, then drives a screw right through both mesh and frame to ensure a vice-like grip.

Tamper-Resistant Screws

Exclusive to Crimsafe. Screws can only be applied or removed by a tool registered with Crimsafe.

Blocks Heat Transfer

Blocks out 53% of solar heat gain through windows, keeping your home cooler in summer and warmer in winter. Save on power by reducing running cost of air-conditioning.

Australian Standards

Crimsafe always exceeds the relevant Australian and industry standards for security.

Inward and outward opening options available.



CRIMSAFE BI-FOLDS & PATIO ENCLOSURES



Crimsafe bi-fold doors and patio enclosures are the perfect way to bring the outdoors into your alfresco area. These strong and stylish products keep mosquitoes and intruders out but allow the breeze to flow through.

Fits Existing Structures

Crimsafe bi-fold doors can be added to existing glass bi-folds or to an open alfresco area creating a secure, insect free space.

Concealed Fasteners

Snap-in covers conceal the product's fixings to enhance the smooth looks of any patio enclosure.

Screw-Clamp™ Security

Only Crimsafe clamps 304 structural grade, Tensile-Tuff® security mesh between two serrated pieces of metal, then drives a screw right through both mesh and frame to ensure a vice-like grip.

Tamper-Resistant Screws

Exclusive to Crimsafe. Screws can only be applied or removed by a tool registered with Crimsafe.

Enhanced Lifestyle

Crimsafe provides unhindered views, keeps out mosquitoes, and lets you keep a cool, safe house in summer.

Blocks Heat Transfer

Blocks out 53% of solar heat gain through windows, keeping your home cooler in summer and warmer in winter. Save on power by reducing running cost of air-conditioning.

Australian Standards

Crimsafe always exceeds the relevant Australian and industry standards for security.



Enclosed alfresco area using Crimsafe patio enclosure

STRENGTH & TESTING

Australian Standards set out the level of quality required for all products sold in this country. Crimsafe products don't just meet those standards – their products are developed to exceed them.

Crimsafe exceeds standards for impact, jemmy and knife-shear testing to ensure our screens provide the highest level of protection against intruders.

In addition, Crimsafe security screens are energy efficient, corrosion resistant, filter UV rays and provide fire attenuation and bushfire protection.

Superior Strength Against Impact

This is relevant to the strength of the security screen and the impact it can withstand in the event of a break-in attempt.

Dynamic impact testing measures how well a security screen holds up to the full force of a criminal's kicks, punches or charges and is measured in 'joules'.

Independent research conducted by the University of Queensland tested a wide range of security screens. Crimsafe exceeded the impact level required by Australian Standards and far out-performed competitor products, making Crimsafe the strongest stainless steel security screen system on the market.

Resistant To Knife Attack

Home intruders will often attempt to slash security screens with a blade to gain access to your home.

All Crimsafe screens easily pass the Australian Standard Knife Shear Test, because all Crimsafe screens come equipped with our unique Tensile-Tuff® mesh – the industry leading 0.9mm, 304 structural grade, high tensile stainless steel security mesh.

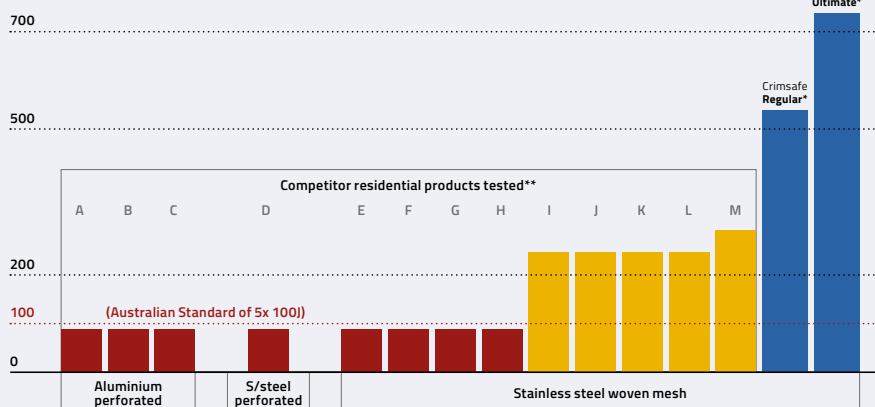
No Leverage For Toolled Attack

Lever tools like screwdrivers or crowbars are popular among home invaders because some security screens have weak points in their construction – making it easy to lever apart the frame, lock or hinges.

But they're no match for a Crimsafe screen. Years of development and rugged construction mean that all Crimsafe products meet Australian Standards in every section of the lever attack or jemmy test.



When tested by The University of Queensland, our screens stood up not just against an Australian Standard of 5 x 100 Joule (J) impact, but also against singular impact levels up to 550J (Crimsafe Regular) and 750J (Crimsafe Ultimate).



Aluminium and stainless steel perforated products use a single sheet of metal with holes punched in it to create the 'screen'. Woven mesh screens (such as Crimsafe) use wires woven together to form a mesh screen. *Single Impact **Multiple Impacts

Too Tough To Pull Down

If they can't use brute force to smash through a screen, criminals will try to attack the edges of a security screen, and pull it from its housing.

The Australian Standard Pull Test investigates how well a security screen can withstand these kind of attacks.

Every Crimsafe screen meets the Australian Standard requirements. Our unique Screw-Clamp™ technology ensures that the mesh can't be pulled from the frame at all, and the rigid Tensile-Tuff® mesh guarantees no hand hold.

COLOUR RANGE

Colours shown below are a guide only and may differ from actual finished product.

Clearview Security's extensive range of security screens and doors not only keep you and your loved ones safe, but they look great too. With an incredible selection of designs and colours for you to choose from, it will blend seamlessly into your existing colour scheme.

We work with the largest global manufacturer of powder coatings so you can be sure to find the perfect colour solution to match your space.

We can custom build security windows and doors to your exact specifications and have something to suit all styles and budgets.

Once installation has occurred, our staff ensures the job is complete with our finishing touches. We colour match the frame and all exterior screws to your existing ones, so nothing will look out of place. Your satisfaction is our number one priority.

View some of our range of colour here;

Anodic



Excel



Living





3M™ SECURITY & SOLAR FILM



Whether your need is for safety, heat reduction or privacy, Clearview Security have a wide range of quality security, solar and decorative films to suit your home or office.

Tear Resistant & Strong

3M™ Safety and Security Film uses modern technology that incorporates up to 42 micro thin layers overlaid in a criss-cross pattern to make the glass more impenetrable.

High Solar Control

Solar Control Films have been proven to reduce UV rays and annoying glare. They also reduce fading and damage to your home furnishings and floor coverings.

Enhanced Lifestyle

By reducing the amount of heat entering your home, 3M™ window films help maintain an even climate inside your home, reduce your air conditioning costs, create greater comfort and help save our valuable resources.



Privacy Control

3M metallised films give you the best daytime privacy by allowing you to see out while those outside are unable to see in. This helps deter unwanted visitors by obscuring valuable contents in your home.

Lifetime Quality Promise

3M™ Safety & Security film is guaranteed in writing by 3M™ to never break down, lose its strength, bubble, peel, discolour or lose its optical quality.

SLAT FENCES & GATES

There's more to Clearview Security than screens and doors. Why not look into our fencing and gate products to perfectly finish off your home? You can tailor your fencing and gates to match the colour scheme of your home to create a polished and stylish look.

Our powder coated commercial grade aluminium slats will create an attractive option for all your fencing and gate needs. Available in any powdercoat or timber look colour, you can create a strong and durable solution without compromising style. Designed to withstand the rigours of the tough West Australian climate, slats can be spaced to match your desired level of privacy and can be as functional or decorative as you like.

Fencing in-fill panels are manufactured to meet your exact needs off site in our factory, meaning less noise and mess associated with some DIY systems available. Pedestrian gates are available in both vertical and horizontal designs and have the added security feature of being key lockable.

Low maintenance and quick and easy to clean, make a great first impression before stepping through the front door! Plus, you can rest easy knowing the trusted team at Clearview Security are looking after you.



GUIDES & GUARANTEES



Crimsafe Care Guide

Crimsafe Tensile-Tuff® mesh is highly corrosion resistant, however all mesh can trap airborne dirt and impurities, and over time these may give it a stained appearance. Staining of the mesh coating caused by a combination of salt, moisture and airborne impurities may result in reddish marks (airborne impurities) or 'fluffy' white marks (salt build up).

It is therefore essential that routine maintenance occurs as to keep your security door, window or screen in pristine condition and proper working order. For this reason all Clearview security products come with an after-care manual, which details the best way to maintain your product.

Necessary regular maintenance involves a wash down of frames and mesh with Crimsafe Wash and Wax in warm water using either a soft non-abrasive brush, followed by a clean water wipe down.

Crimsafe cleaning products are available from us at Clearview Security.

Warranty

All Crimsafe products are covered with an instant 10 year warranty. Crimsafe Regular products gain an additional 2-year warranty and Crimsafe Ultimate an additional 5-year warranty when registered online within 60 days of purchase.

Our product comes with guarantees that cannot be excluded under the Australian Consumer Law. You are entitled to have the product repaired or replaced if the product fails to be of acceptable quality.

Insurance Excess

We are so confident in the strength and durability of our products, that in the unlikely instance that someone breaks through a Crimsafe Clearview Security screen or door, we will pay for any insurance excess!

Your safety and your belongings are important to us, that's why we put quality and service first, every time.



For full terms and conditions visit www.crimsafe.com.au/warranty



CLEARVIEW SECURITY

Ph: (08) 9443 8633

32 Drake Street Osborne Park WA 6017

info@clearviewsecurity.com.au

www.clearviewsecurity.com.au

3M



Crimsafe is proudly Australian Made